

INSTALLATION GUIDE

Solar support, mounted on aluminium base tile for plain clay roof tiles



CONTENTS OF THE PACKAGE



Solar support (base plate, support head, M8x25 V2A hexagonal screw, M8 V2A nut)



1 pcs 6x80 mm TX 25 A2 screw

REQUIRED FOR THE INSTALLATION



Aluminium base tile (matching with the tile model and its color) 3 pcs of countersunk screws (5x40 mm A2) in the back side



Screws for the board
Min. 6 x 120 mm A2 flat head screws



Board, 30x90 mm
At least S10/C24



Nail sealing or sealing plate

i Note: The aluminium base element mounted with the solar support was tested according to Ö-Norm M7778 with the screws and torque specified in the instructions. The values were met according to the standard and the prescribed partial safety factor. If the installation of the solar support differs from that described in the guide and from CREATON's information, the load capacity according to the applicable standard can no longer be guaranteed in terms of wind pressure and suction force, as well as snow load.

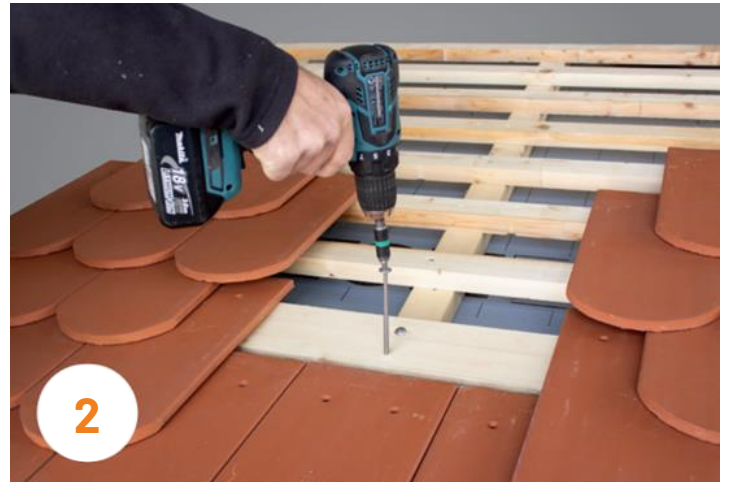
CREATON solar supports are not suitable for fixing solar panels on buildings higher than 25 meters.

The solar supports cannot be used for stepping on the roof or as an attachment point for anti-fall harnesses!

Solar support, mounted on aluminium base tile for clay roof tiles

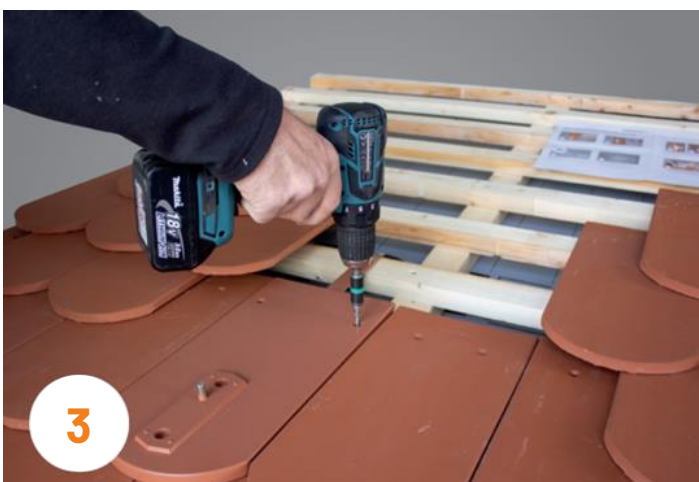


The position of the additional board (30x90 mm) is determined by the applied batten distance. The board replace a roof batten.



The board is fixed to the rafters with 2-2 pcs of 6x120 mm A2 countersunk head stainless screws. The upper screw must be screwed in at 60°, while the lower screw must be screwed in at 90°, keeping a distance of at least 30 mm from the edge of the board.

i Note: When using above the rafter insulation, a longer screw (which corresponding with the insulation thickness) should be used.



The aluminium base element is placed on the roof battens just as a roof tiles.



Fasten the aluminum base element to the roof batten with the countersunk head stainless steel screws (3 pieces 5x40mm) included on the back of the base element, two screws go through the nail hole and one screw through the strap.



5

Fasten the aluminum base element to the roof batten with the countersunk head stainless steel screws (3 pieces 5x40mm) included on the back of the base element, two screws go through the nail hole and one screw through the strap.

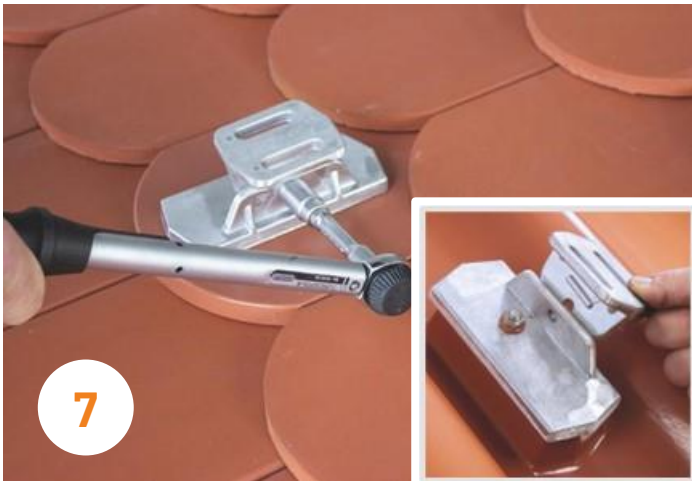
i Note.: The aluminum base tile and the clay tiles lying below can also be pre-drilled using a 6 mm drill bit.



6

The base plate of the solar support must be fixed with the M8 nut belonging to the aluminum base tile.

i Note: The nut must be tightened with a torque of 16 Nm.



7

The head of the support is attached to the base plate with the hex head screw and M8 nut included in the package.

i Note: The head of the support must be adjusted to be parallel with the rafters. The screw connection must be tightened with a torque of 16 Nm.



8

Place the roof tiles around the supports