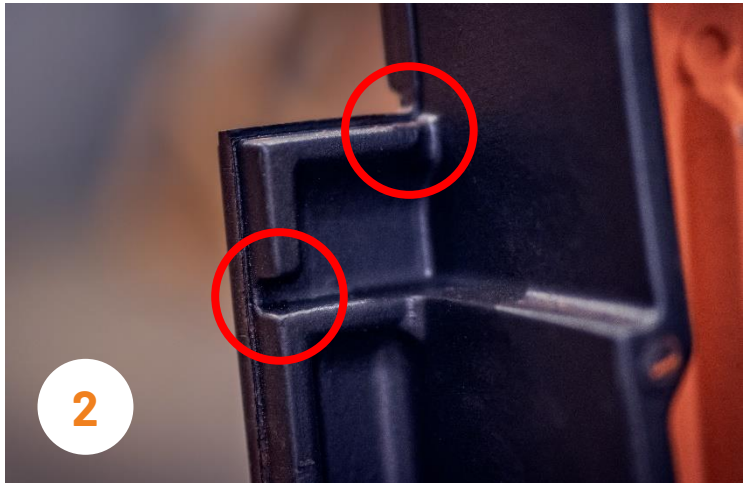


# INSTALLATION GUIDE

## NOMINA verge tile

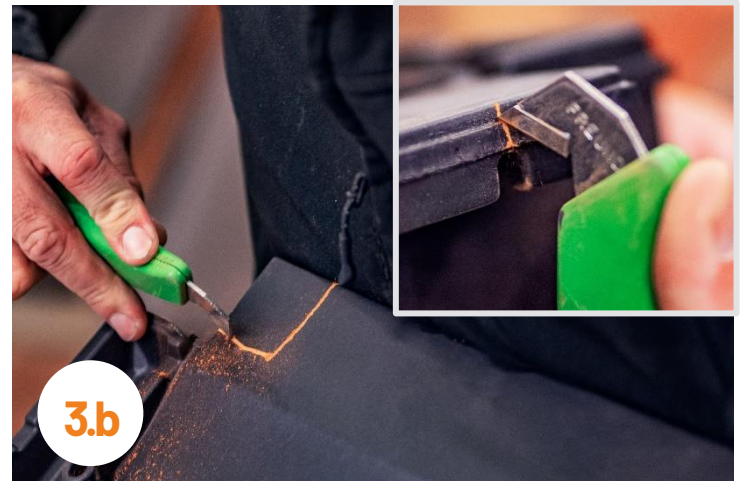


The NOMINA verge tiles can be installed without modification between 435-405 mm batten spacing.

The amount of the roof batten overhang is a max. 30 cm from the outer edge of the support.

A distance of at least 1 cm is required between the inner edge of the side plate of the verge tiles and the outer edge of the roof structure (e.g. between the verge board or the verge covering).

Below a batten distance of 405 mm, the upper corners of the verge tiles must be broken out along with the factory perforations.



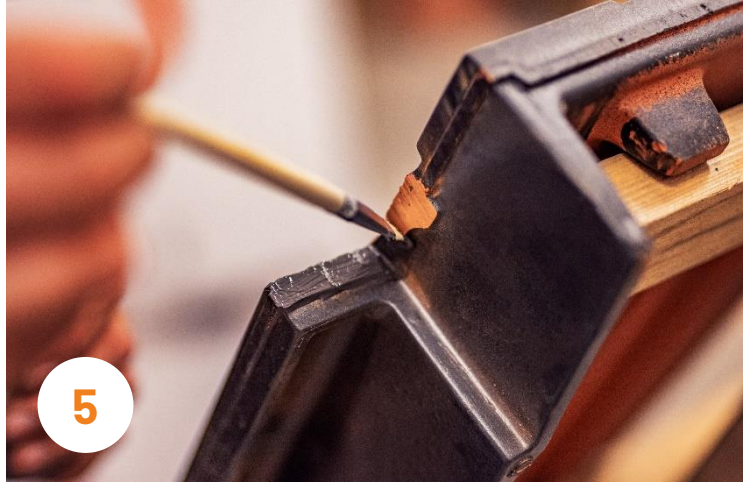
To do this, use a cutting disc or wet table saw to prevent excessive dust formation.

When using a cutting disc or a saw, it is mandatory to wear protective equipment and comply with occupational safety regulations!

The break-out of the upper corner can be made using a scratching pin and pliers. The tile must be scratched not only on its surface, but also on the side of the tile body.



The upper corner of the tile can be broken out using pliers along the scratch.



Further modification of the verge tiles is not necessary! The cut edges can be painted over with the included colormatching acrylic repair paint, using a brush.

The surface to be coated must be clean and free of dust and any flaking layers! The repair paint can be used above +5°C.

In case of contact with the eye or skin rinse/wash off immediately with plenty of water.

Follow the work safety rules for painting and decorating.



Each of the verge tiles must be fixed to the roof batten with a corrosion-resistant screw with a diameter of at least 4.5 mm through the prepared nail hole, with a screw-in depth of at least 24 mm.



Verge tiles can only be used along verges perpendicular to the eaves line.